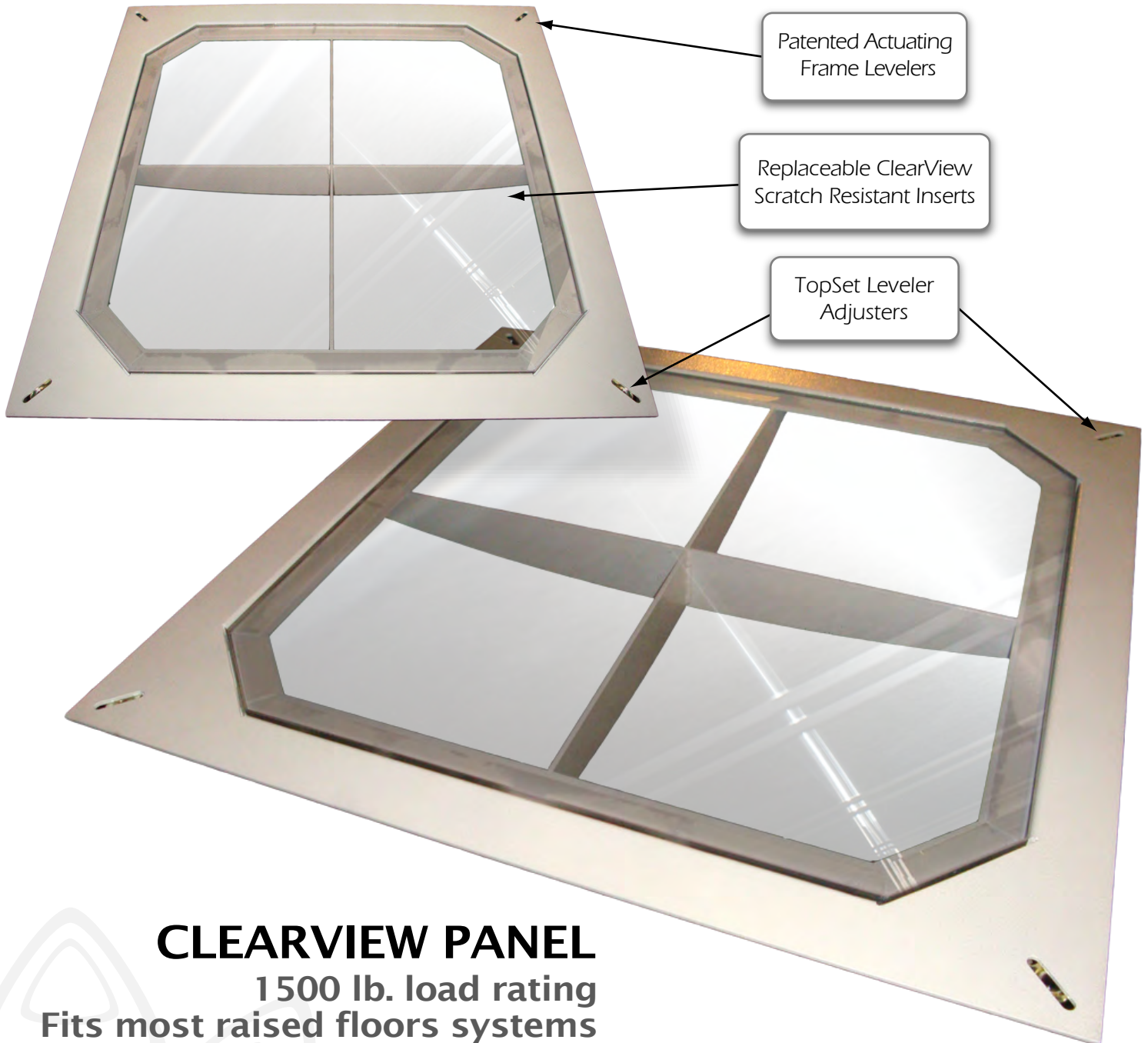




Triad's ClearView Panel

Designed for easy viewing of valves, meters and underfloor cavity
Scratch resistant surface is perfect for foot traffic



CLEARVIEW PANEL
1500 lb. load rating
Fits most raised floors systems

Triad Raised Access Floor Company • Fax - 303-526-4902 • Phone - 720-530-8699
support@triadfloors.com • www.triadfloors.com

*Manufacture reserves the right to change design/specifications without notice.
This copy is provided on a Restricted Basis and is not to be used in any way Detrimental to the Interests of Triad.

Additional Triad® ClearView panel Key Features:

- Static Dissipative Textured PowderPlate finish eliminates delamination and missing/broken Edge trim issues.
- TopSet levelers are designed for easy leveling to different raised floor panels
- One panel fits most all new or existing raised floor systems.
- Virtually unbreakable
- CC-1 code approval
- UV resistant
- Highest rating for plastic
- Long lasting clarity

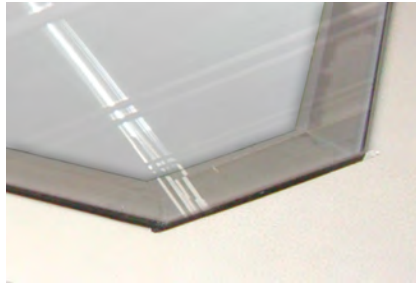
General Application:

- Data Center Foot traffic areas. (Not intended for equipment static or dynamic loads)
- Easy viewing of; UnderFloor Valves, Pipes, Gauges, Electrical, etc..

Patent Pending Features:



Patented Actuated Frame Levers



Replaceable ClearView Scratch Resistant Inserts



TopSet™ leveler with Liebert handle key inserted

TRIAD STATIC DISSIPATIVE TEXTURED POWDERPLATE COATINGS



Beige Flek



Brown Flek



Crystal White



Grey Flek



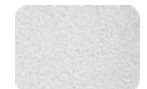
Luna



Aggregate



SandStone



Genesis

These color samples are representative only and will vary from the actual color depending on the computer monitor or printer used to view them. For accurate color, gloss and texture sample contact Triad. Conductive and chemical resistant coatings are available upon request.

TRIAD

Triad Raised Access Floor Company • Fax - 303-526-4902 • Phone - 720-530-8699
support@triadfloors.com • www.triadfloors.com

Manufacture reserves the right to change design/specifications without notice.

**This copy is provided on a Restricted Basis and is not to be used in any way Detrimental to the Interests of Triad.*